

What is Your Vision For Columbus?

Task 1: Your priorities

Below are a number of potential guiding principles for the Columbus Part II Plan Area.

Rank the principles from 1 to 10, where 1 is very important and 10 is not as important. Did we miss any principles? If so, add them in the space below and rank them.

- | Rank | Principle |
|-------|---|
| _____ | Columbus's cultural heritage will be conserved and enhanced. |
| _____ | The neighbourhood will be well connected to other parts of the City through public transit and active transportation networks. |
| _____ | New development and infrastructure will use innovative sustainability measures to conserve energy and water. |
| _____ | The community will be compact and enhance opportunities for walking and cycling. |
| _____ | The creeks, valleys and other related natural features that run through Columbus will be protected and maintained. |
| _____ | Land uses will allow for a variety of housing types. |
| _____ | The unique landforms and topography will be carefully incorporated into new plans and development. |
| _____ | A network of parks, open spaces and trails will provide opportunities to be active and connect to existing natural heritage features. |
| _____ | Transitions between residential and surrounding agricultural land uses will be carefully considered. |
| _____ | Transitions between residential and future industrial land uses will be carefully considered. |
| _____ | _____ |
| _____ | _____ |
| _____ | _____ |

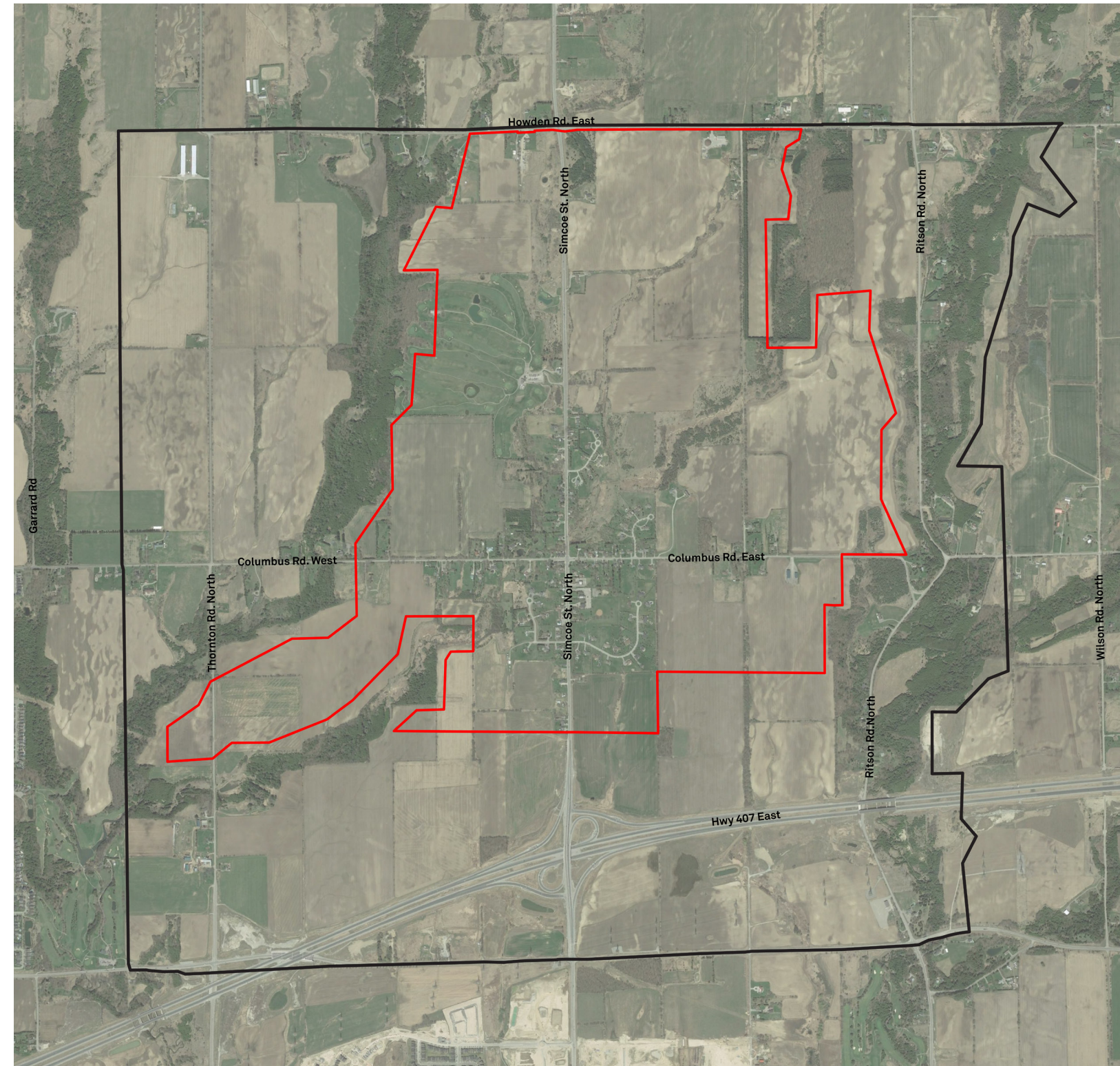
Task 2: Your places

The map to the right shows the limits of the Study Area, including the Columbus Part II Plan Area.

Draw on the map to show us important places in the community and possible new land uses.

Task 3: Your vision

Write down your vision for Columbus. It can be a sentence, a paragraph or something longer.



Columbus Study Area Boundary
 Columbus Part II Plan Area