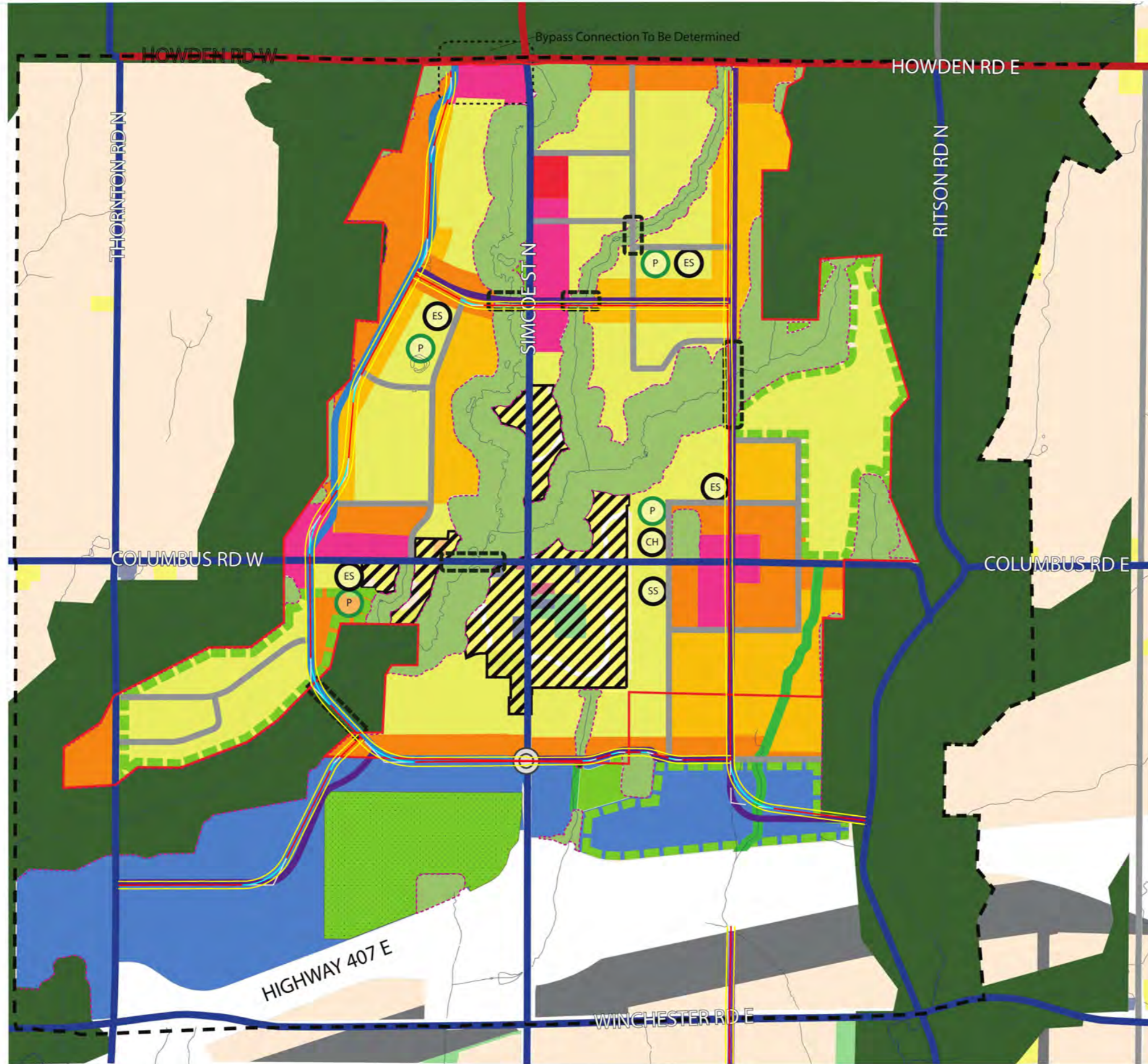
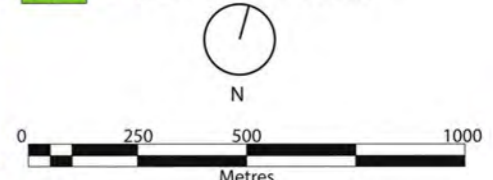


City of Oshawa  
 Integrated Columbus Part II Planning Act  
 & Municipal Class EA Study  
**Alternative 2**



- Columbus Study Area Boundary
- Columbus Part II Plan Area
- Water Bodies
- Watercourse/Drainage Feature (C.S.W.S.)
- Land Use**
- Columbus Special Policy Area
- Low Density Residential
- Medium Density Residential I
- Medium Density Residential II
- High Density Residential I
- Mixed Use
- Prime Agricultural
- Employment
- Community Park Location Option
- Elementary School
- Secondary School
- Park
- Community Hub
- Road Network**
- Existing Type A Arterial Road
- Existing Type B Arterial Road
- Existing Type C Arterial Road
- Proposed Type B Arterial Road
- Proposed Type C Arterial Road
- Proposed Collector Road
- NHS Crossing
- Potential Roundabout
- Natural Heritage System**
- Greenbelt Plan Protected Countryside
- C.S.W.S. Natural Heritage System
- Vegetation Protection Zone (Phase 1)
- Proposed Linkage Area
- Proposed Enhancement Area
- MTO SAR Compensation Lands



August 2019